



# ONDA THANA MAHAVIDYALAYA

INTERNAL QUALITY ASSURANCE CELL

## BROCHURE 2023-24

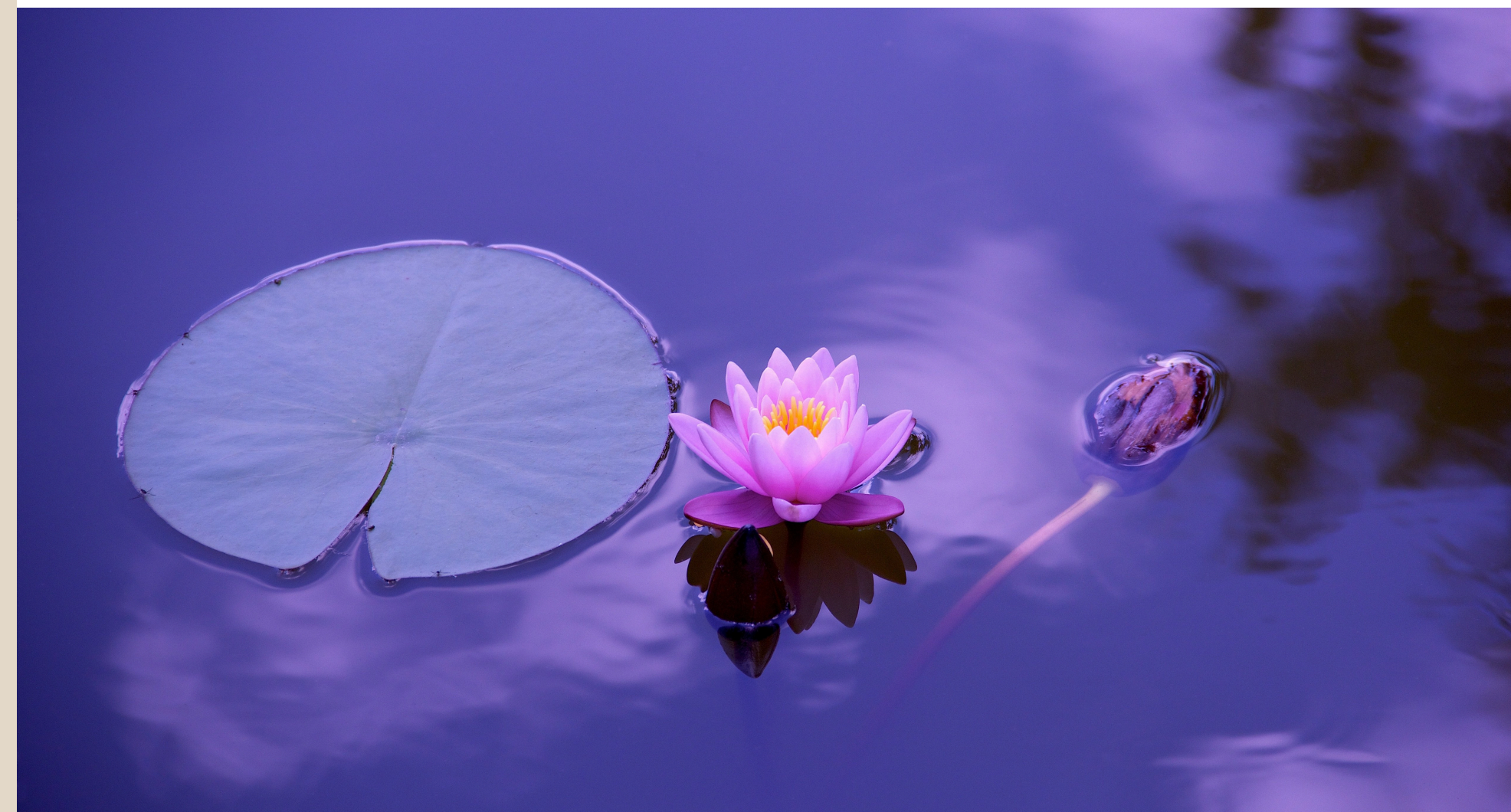
College Tour

Code of Conduct

Provisional Class Routine

Academic Calendar

**Welcome all to the Green Campus**



# College Tour



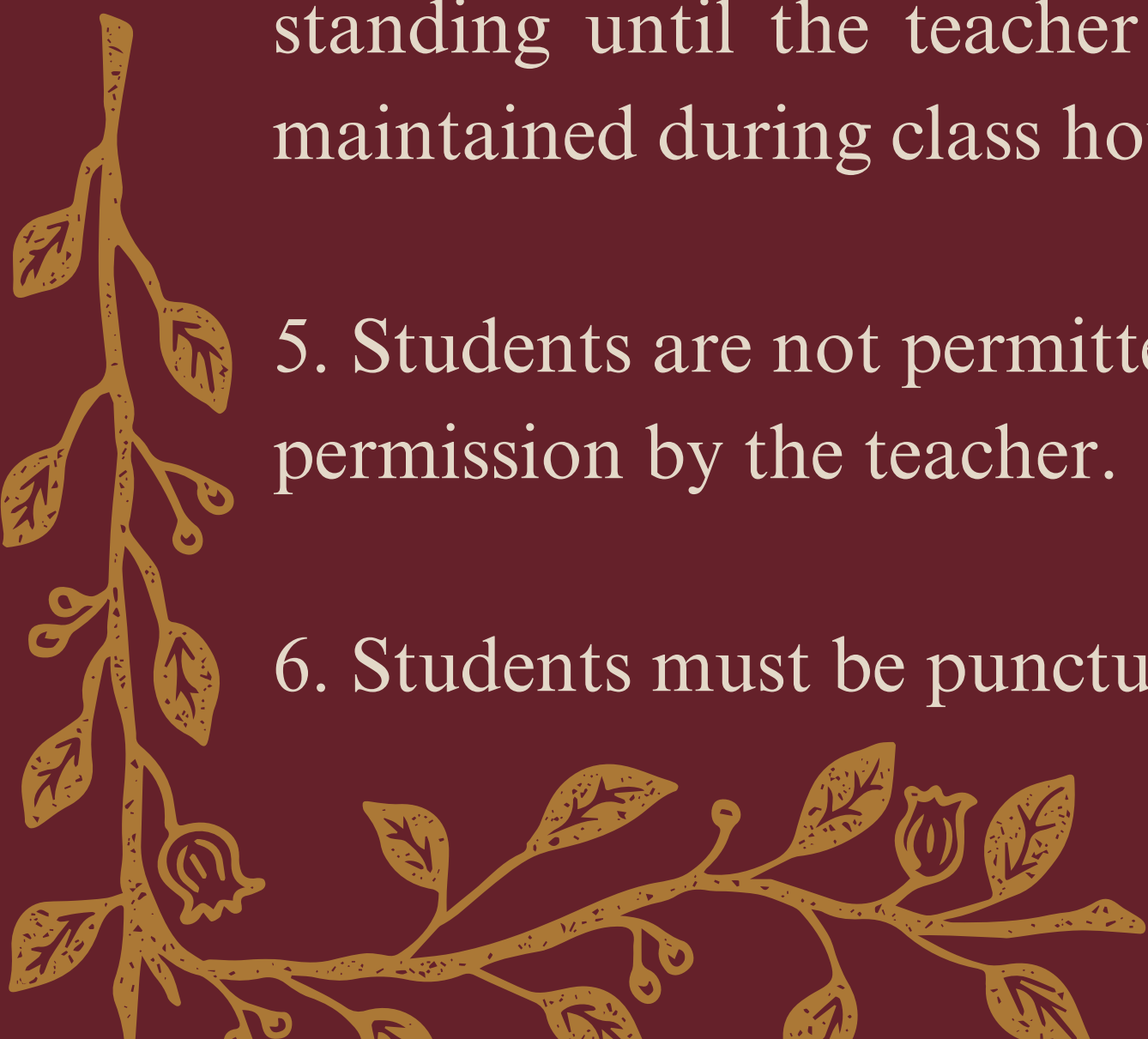
# Introduction

Onda Thana Mahavidyalaya, a Grant-in-Aid State Government-sponsored College, is a budding and promising educational institution located in the margins of Bankura Town, West Bengal, India. Founded in 2007 the college started its journey with the approval of the Higher Education Department [G.O. No. 510-Edn (C.S.)]. Soon it obtained the affiliation of The University of Burdwan (vide Ref. No. IC/Affen./P/141/941 dated 06/06/2007). From the academic session 2008-09, permission was given by the University for introducing Bengali (Hons.), History (Hons.) Sanskrit (General), and Geography (General), from the session 2009-10 for introducing English (Hons), from the session 2010-11 for introducing Physical Education, from the session 2011-12 for introducing Sanskrit (Hons), and from the session 2013-14 affiliation was given for introducing Education (General) also. Since 2017, the college has been affiliated with Bankura University (RO/BKU/33/2017, dated 08.02.2017). The College is happy to announce that in 2017 it was affiliated under sections 2F & 12B of UGC. At present, the college has been affiliated with Bankura University since 01.01.2017 [(F. No.8-400/2016 (CPP-I/C)].



# Codes of Conduct

- 1.. All the stakeholders, teachers, non-teaching staff and students Students must adhere to the highest standards of discipline and maintain dignified behaviour both inside and outside the college campus. They are required to strictly abide by the rules and regulations of the college and conduct themselves in a manner that exemplifies the discipline and esteem of the college.
2. It is mandatory for every college student to carry a valid identity card with a recent photograph and signature of the principal, well displayed while on campus.
3. All stakeholders must arrive on time. Students must ensure at least 75% attendance otherwise they may not be allowed to sit for the Internal Assessment.
4. students must stand up as soon as the teacher enters the classroom, and they must continue standing until the teacher takes their seat or allows them to sit. Absolute silence is to be always maintained during class hours.
5. Students are not permitted to enter or exit the classroom during a session unless given explicit permission by the teacher.
6. Students must be punctual and regular in attending classes, tutorials, class tests examinations etc.

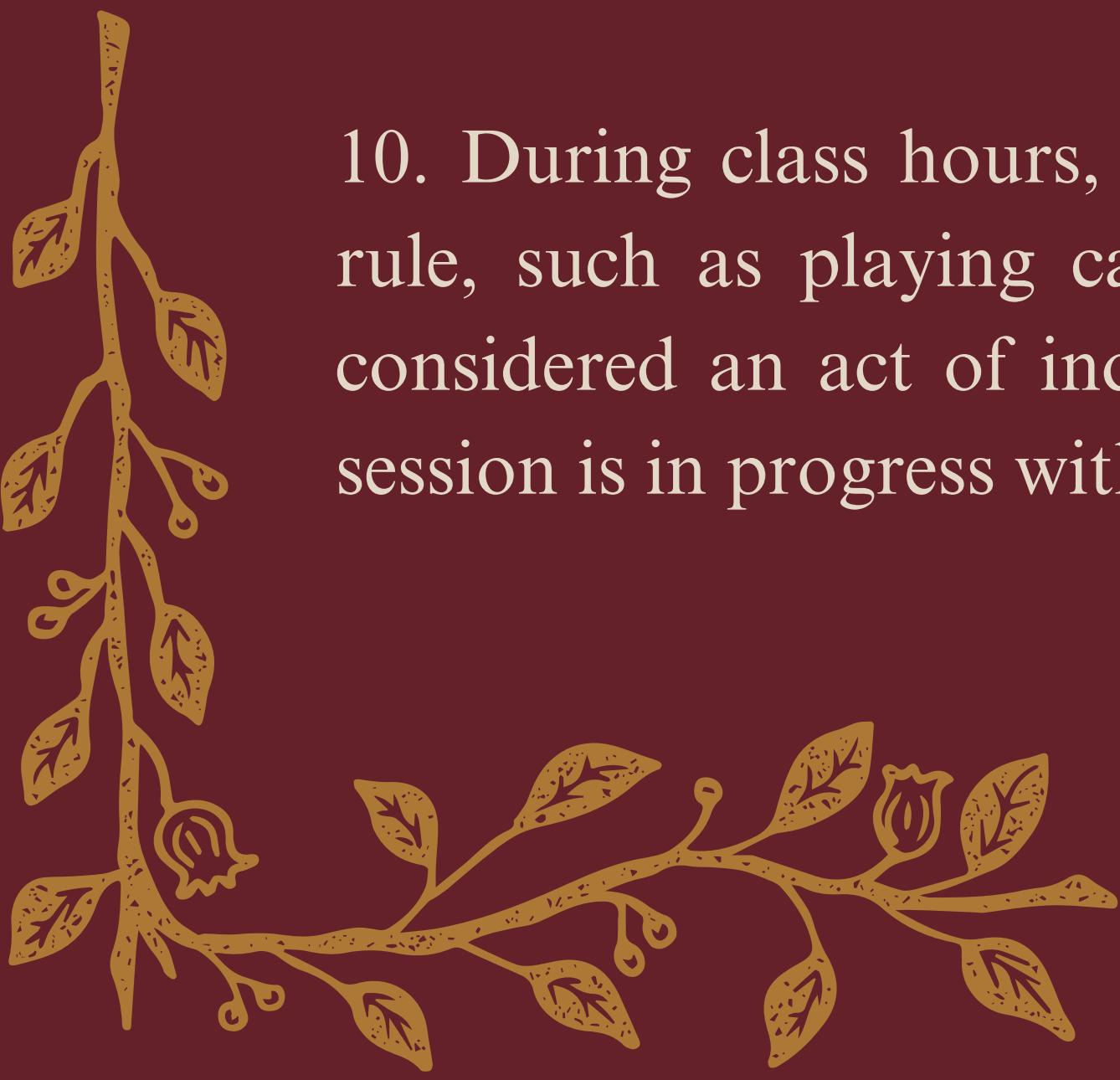


7. Ragging, anti-institutional, anti-national, antisocial, communal, immoral or political expressions and activities within the Campus are strictly prohibited and will not be tolerated under any circumstances. Any individual found indulging in such activities will be subject to strict disciplinary action which may include expulsion from the institution. Harassing juniors, misbehaviour towards female students, or any such form of ragging is completely unacceptable and will be treated as a criminal offence, with legal action taken against the perpetrator. We take a strong stance against any kind of misconduct and are committed to maintaining a safe and secure campus environment for all.

8. If any student is affected by ragging on college premises, they must immediately inform the Principal or ICC and Anti-Ragging Committee Convener.

9. It is important for students to check both online and offline notice boards regularly. Failure to do so will result in no excuse being considered for any missed information.

10. During class hours, it is important to maintain silence. Any behaviour that deviates from this rule, such as playing cards, spitting tobacco products, hooting, whistling, loitering, etc., will be considered an act of indiscipline. No student is allowed to enter or leave the classroom while the session is in progress without the permission of the teacher in charge.



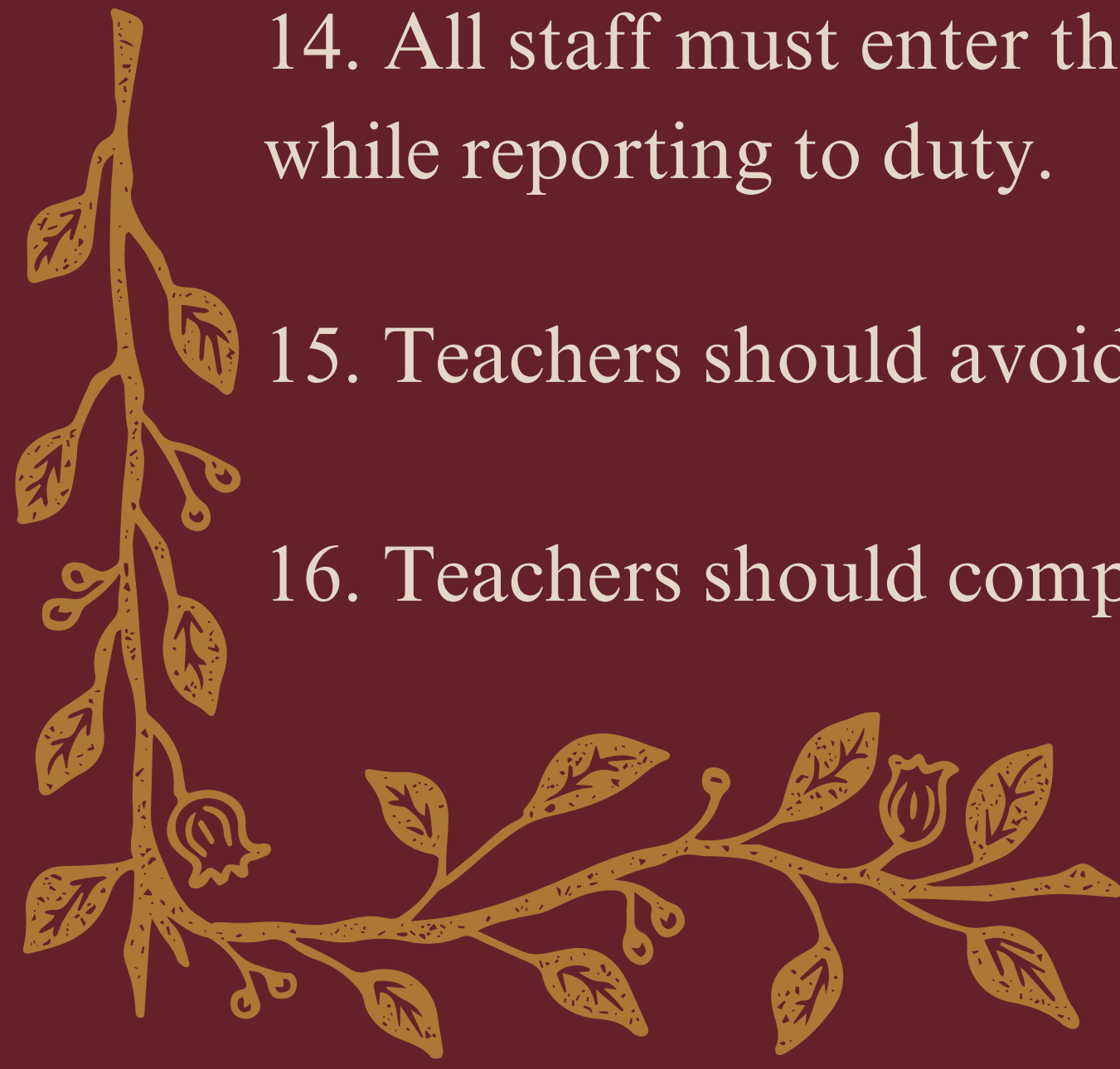
12. Any act of attempted theft or damage to any property that belongs to the college community, including assets, buildings, equipment, or any personal or public property, whether on or off-campus, will be considered as a punishable offence. The college administration takes this matter very seriously and will investigate any such incidents thoroughly. Individuals found guilty of such offences will be subject to disciplinary action, which may include suspension, expulsion, or even legal consequences, depending on the severity of the offence. It is the responsibility of every member of the college community to report any such incidents promptly to the appropriate authorities.

13. There are CCTV cameras on the college premises, and everyone must follow disciplinary rules in the campus and classrooms.

14. All staff must enter their fingerprints in the college biometric machine after entering the college while reporting to duty.

15. Teachers should avoid using cell phones during class hours.

16. Teachers should complete the syllabus on time and be accountable for good results



17. The non-teaching staff should report for duty on time and remain on the campus during working hours.

18. The non-teaching staff should enter their fingerprint in the college biometric machine after entering the college and sign the attendance register while reporting to duty.

19. The non-teaching staff should create and maintain an amiable yet professional relationship with both students and other staff members.

20. The non-teaching staff should obtain prior permission from the concerned authority before taking leave from his/her duties. In case of sickness or absence on medical grounds, a medical certificate to the satisfaction of the college authorities shall be produced within a week.



# Opportunities

The college offers undergraduate courses in subjects like Bengali, Education, English, Geography, History, Philosophy, Political Science, Physical Education, and Sanskrit. The Geography and Education departments have computer labs. The college arranges special classes to foster academic interests, conducts internal assessments, and has a reliable feedback system. The College Library has subscriptions to databases, and faculty members participate in workshops and seminars. The Department of Geography conducts field surveys and offers Communicative English and Computer Literacy Programmes. These programs provide practical exposure to geographical phenomena and ensure students are well-equipped for academic and professional pursuits.



# Building New Opportunities

1. Classes on English Communication, Bengali Grammar and Sanskrit Communication for all students
2. Vocational Based Add-on and Value Added Courses
3. Career Counselling Programmes conducted by the leading companies and educational institutions of the country
4. Collaboration and Internship for industry level training
5. Free training on Civil Service Examinations and Other Competetive Examinations.
6. All classrooms are empowered with ICT facilities
7. Workshops on employability and on-campus job fair



Class Routine

**ONDA THANA MAHAVIDYALAYA**  
**PROVISIONAL ROUTINE (SESSION 2023-24)**

	1 11:00-12:00	2 12:00-01:00	3 01:00-02:00	4 02:00-03:00	5 03:00-04:00	6 04:00-05:00	ONLINE
M O N D A Y  SEM 1	Phys. Education Practical (NEW TEACHER)	<b>Major (MJ-1)</b> Bengali - 11 (AK) English - 2 (ND) Geography-[Geo Lab] (BC) Pol. Science -12 (AKB) Phys. Education -Indoor (NEW TEACHER )	<b>Major (MJ-1)</b> Philosophy- 11 (M. SUTRA.) Education- Indoor (SD) Sanskrit - 10 (RK)	<u>Multidisciplinary (MD)</u> Geography- LAB OR FIELD (BC)			<u>Multidisciplinary (MD)</u>  Phys. Education (NEW TEACHER)
SEM 3	<b>Hons.</b> Bengali- 1 (AK) English -2 (ND) Education- 10 (SD) Geography -(Geo Lab) (BC) Philosophy- 6 Pol. Science - 9 (AKB) Sanskrit - 5 (AP)	<b>Hons.</b> Bengali- 1 (JA) English - 8 (SN) Education- 10 (SAH) Geography - (comp lab) Philosophy- 6 (M. SUTRA.) Pol. Science - 9 Sanskrit - 5 (RK)	<b>Prog. + HG</b> Education- 10 (SAH) Phy. Education- union room (New Teacher) Pol. Science - comp lab Sanskrit - 5 (MG)	<b>Prog. + HG</b> Bengali- 12 (AK) English -2 (KB) Geography -(Geo Lab) Philosophy- 6 (AG)	<b>Prog (MIL)</b> Bengali- Indoor (JA)  <b>HONS.</b>  PHILOSOPHY- 12 (AG)	<b>Prog (SEC)</b> Bengali -12 (RN) English-Union Room (KB) Education 11 Geography - 8 Pol. Science - 9 Sanskrit - 5 (MG) Phys. Education -Indoor (NEW TEACHER)  <b>HONS.</b>  PHILOSOPHY- 12 (MS)	<b>All Hons. (ONLINE)</b>
SEM 5	<b>HONS.</b> PHILOSOPHY- 12 (M. SUTRA.)		<b>All Hons.</b> Bengali- 1 (JA) English -2 (SN) Education- 8 Geography - (Geo Lab) Philosophy- 6 (AG) Pol. Science - 9 (AKB)	<b>Prog</b> Bengali- 1 (RN) English -12 (N1) Geography -9 Philosophy- 11 (MS)  <b>Hons.</b> Sanskrit - 5 (AP)	<b>All Hons.</b> Bengali- 1 (RN) English -2 (N1) Education- 10 (SD) Geography - (Geo Lab) Philosophy- 6 (MS) Pol. Science - 9 Sanskrit - 5 (MG)  <b>PROG</b> Education- 11 (SAH) Pol. Science - 8 Phy. Education- union room ( NEW TEACHER ) Sanskrit - 12 (RK)		<b>All Hons. (ONLINE)</b> Bengali - 11 (AK) Geography-[Geo Lab] (BC) Pol. Science -12 (AKB) Philosophy- 11 (M. SUTRA.) Education- Indoor (SD) Sanskrit - 10 (RK)

N1= NEW TEACHER 1

N2= NEW TEACHER

\*\*\*\* Online classes will be conducted in the evening via Google Meet. The link to the class will be uploaded on the ERP at least one day before the class.

**ONDA THANA MAHAVIDYALAYA**  
**PROVISIONAL ROUTINE (SESSION 2023-24)**

	1 11:00-12:00	2 12:00-01:00	3 01:00-02:00	4 02:00-03:00	5 03:00-04:00	6 04:00-05:00	
T U S D A Y  SEM 1		<u>MINOR (MN-1)</u>  Philosophy- 11 (KS) Education- [Indoor] (SAH) English- 6 (KB)	<u>MINOR (MN-1)</u>  Bengali - 11 (RN) Geography-[Geo Lab] (BC) Pol. Science – 9 (AKB) Sanskrit – 5 (BM) Phys. Education (Indoor) ( NEW TEACHER )		SEC (Major) Sanskrit- (RK)	<u>SEC (Major)</u>  PHILOSOPHY- 6 (RS)	ONLINE  <u>Environmental Studies (VAC-1)</u> (ONLINE)
SEM 3	<u>Hons.</u> PHILOSOPHY- (KS)  <u>Hons. (SEC)</u>  Bengali – 8 (RN) English- 12 (KB) Education- 11 (SD) Geography – geo lab (SK) Phys. Education (Indoor) ( NEW TEACHER )	<u>All Hons. (SEC)</u>  Philosophy- UNION ROOM (RS) Political Science- 12 (SSA) Sanskrit-5  <u>HONS</u> Sanskrit- (MG)	<u>Prog. + HG</u>  Bengali -1 (JA) English- 12 (KB) Philosophy- 6 (AG) Geography - 8 (SK)	<u>All Hons.</u> Bengali- 1 (AK) English -2 (SN) Education- 10 (BD) Geography - (Geo Lab) (BC) Philosophy- 6 (AG) Pol. Science – 9 (SSA)  Sanskrit – 5 (RK)  <u>Prog(MIL)</u> Sanskrit- 8 (BM)	<u>All Hons.</u> Bengali- 1 (JA) English -2 (SN) Education- 10 (BD) Geography - (Geo Lab) (BC) Pol. Science – COMP LAB (AKB) Sanskrit – 5 (AP)	<u>Prog. + HG</u>  Education- 10 Phy. Education- Indoor (N1) Pol. Science - 9 Sanskrit – 5 (AP)  <u>HONS</u> Bengali- 1 (CM)	
SEM 5	<u>Hons.</u> Bengali- 1 English -2 (N1) Education- 10 (SAH) Geography - (Geo Lab) Pol. Science – 9 (SSA) Sanskrit – 5 (MG)	<u>Hons.</u> Bengali- 1 (AK) English -2 (N1) Education- 10 (BD) Geography - (Geo Lab) Pol. Science – 9 (AKB) Sanskrit – 8 (RK)	<u>HONS.</u> PHILOSOPHY- 2 (KS) Bengali- comp lab (CM)	<u>Prog. (GE 1)</u> Bengali- 12 (CM) English -Indoor (N1) Phy. Education- 11 ( NEW TEACHER )  <u>HONS.</u> PHILOSOPHY- 12 (RS)	<u>Prog. (GE 1)</u> Education- 10 (SAH) Geography - (Geo Lab) (SK) Philosophy- 6 (AG) Pol. Science – 9 (SSA)  <u>HONS</u> Sanskrit – 12 (BM)		<u>All Hons. (ONLINE)</u>

N1= NEW TEACHER 1

N2= NEW TEACHER

Online classes will be conducted in the evening via Google Meet. The link to the class will be uploaded on the ERP at least one day before the class.

**ONDA THANA MAHAVIDYALAYA**  
**PROVISIONAL ROUTINE (SESSION 2023-24)**

	1 11:00-12:00	2 12:00-01:00	3 01:00-02:00	4 02:00-03:00	5 03:00-04:00	6 04:00-05:00	ONLINE
W E D N E S D A Y SEM 1	<u>Major (MJ-1)</u> Bengali - 11 (JA) English – 8 (SN) Geography– [Geo Lab] (BC) Pol. Science -12 (AKB) Phys. Education-[Indoor] (NEW TEACHER)	<u>Major (MJ-1)</u> Philosophy- 11 (KS) Education- [Indoor] (JP) Sanskrit – 5 (BM)				<u>All SEC (Major)</u> Bengali - 11 English – 2 (SN) Geography– [Geo Lab] (SK) Pol. Science -9 Sanskrit – 5 (MG) Phys. Education-[Indoor] (NEW TEACHER) Education- 10	<u>Multidisciplinary (MD) (ONLINE)</u>  <u>English (AB)</u>  <u>Phys. Education- [Indoor] (TKS)</u>
SEM 3	<u>All Hons.</u> Bengali- 1 (RN) English -2 (BD) Education- 10 (SD) Geography - (Geo Lab) Pol. Science - 9 Sanskrit – 5 (AP)	<u>Prog.+ HG</u> Education- 10 (SD) Phy. Education- Indoor (TKS) Pol. Science - 9 (AKB) Sanskrit – 12 (AP)	<u>Prog.+ HG</u> Bengali- 1 (CM) English – comp. lab (ND) Geography - (Geo Lab) (SK) Philosophy- 11 (KS)	<u>Hons. (SEC)</u> Bengali- 1 (JA) English -2 (ND) Education- 10 (JP) Geography - (Geo Lab) (SK) Philosophy- 12 (RS) Pol. Science - 8 Sanskrit – Union Room (BM)	<u>Hons.</u> Bengali- 1 (CM) English -2 (BD) Education- 10 Geography - (Geo Lab) (SK) Philosophy- 12 (SD) Pol. Science - 8 Sanskrit – Union Room (BM)		<u>All Hons. (ONLINE)</u>  <u>English Hons (AB)</u>
SEM 5	<u>Hons.</u> <u>PHILOSOPHY- 6</u>	<u>Prog</u> Bengali- 1 (RN) English -2 (BD) Geography - (Geo Lab) (BC)  <u>Prog. (SEC)</u> Philosophy- 6 (RS)  <u>Hons</u> Sanskrit- comp Lab (RK)	<u>Hons.</u> Bengali- 8 (JA) English -2 (BD) Education- 10 (JP) Geography - (Geo Lab) (BC) Philosophy- 6 (RS) Pol. Science - 9 (AKB) Sanskrit – 5 (AP)  <u>Prog.</u> -	<u>Hons.</u> Geography - 8 Philosophy- 12 (SD) Pol. Science – union room (AKB) Sanskrit – comp lab (MG)  <u>Prog.</u> Education (SD)	<u>Hons.</u> Bengali- (AK) English -12 (ND) Education- 8  <u>Prog</u> Sanskrit- (RK) Phys. Education- [Indoor] (TKS) Political science-	<u>GE 1 (Prog)</u> Bengali- 1 (CM) Education- Geography - (Geo Lab) Philosophy- 6 (SD) Phy. Education- (NEW TEACHER) Pol. Science -	<u>English Hons (AB)</u>

N1= NEW TEACHER 1

N2= NEW TEACHER

\*\*\* Online classes will be conducted in the evening via Google Meet. The link to the class will be uploaded on the ERP at least one day before the class.

**ONDA THANA MAHAVIDYALAYA**  
**PROVISIONAL ROUTINE (SESSION 2023-24)**

	1 11:00-12:00	2 12:00-01:00	3 01:00-02:00	4 02:00-03:00	5 03:00-04:00	6 04:00-05:00	ONLINE
T H U R S D A Y  SEM 1	<u>Compulsory English</u>  Section-A (SN) ROOM-11 Section-B (ND) ROOM-INDOOR Section-C (BD)- 12	<u>Major (MJ-1)</u>  Philosophy- 12 (RS) Education-11 (SAH) English – 2 (BD)	<u>Major (MJ-1)</u>  Bengali - 11 (CM) Geography– [Geo Lab] (SK) Pol. Science -12 Sanskrit – 5 (MA) Phys. Education-[Indoor] (TKS)	<u>Major (MJ-1)</u>  Bengali - 11 (AB) English – 2 (AB) Geography– [Geo Lab] (AM) Pol. Science -9 Sanskrit – 5 (SM) Phys. Education-[Indoor] (TKS)	<u>Major (MJ-1)</u>  Philosophy -11 (SD) Education- Indoor (BD)	<u>All SEC (Major)</u>  Bengali - 11 (AB) English – 2 (N2) Geography– [Geo Lab] (AM) Pol. Science -9 Sanskrit - 5 Phys. Education-[Indoor] (NEW TEACHER) Philosophy -6 (SD) Education- 10	<u>English Major (KB)</u>
SEM 3	<u>All Hons.</u>  Bengali- 1 (CM) Education- 10 (SAH) Geography - (Geo Lab) (AM) Pol. Science – 9 (SSA) Sanskrit – 5 (MA)  <u>Prog. (SEC)</u> PHILOSOPHY- 6 (RS)	<u>Prog. + HG</u>  Phys. Education- Indoor (TKS) Pol. Science - 9 (SSA) Sanskrit – 5 (BM) Education- 10 (BD)		<u>Prog. + HG</u>  Bengali- 1 (SD) English -union room (N2) Geography - 8 (SK) Philosophy- 6 (KS)	<u>All Hons.</u>  Bengali- 1 (AB) English -2 (ND) Education- 10 (SAH) Geography - (Geo Lab) Philosophy- 6 (KS) Pol. Science - 9 Sanskrit – 8 (RK)		<u>All Hons.</u>  English Hons (KB)
SEM 5	<u>Hons</u> Education- 10 Sanskrit- 8 (RK)	<u>All Hons.</u>  Bengali- 1 (CM) English -union room (KB) Geography - (Geo Lab) Pol. Science – comp lab Sanskrit – 8 (RK)	<u>All Hons.</u>  Bengali- 1 (SD) English – comp lab (BD) Education- 10 (BD) Geography - (2) Philosophy- 6 (RS) Pol. Science - 9 (SSA) Sanskrit – Union room (BM)	<u>HONS.</u>  PHILOSOPHY- 12 (SD) English- 10 (ND)	<u>PROG (SEC)</u>  Political Science- comp lab Phys. Education- union room (NEW TEACHER) Sanskrit – 5 (BM) Geography- Union room (SK)	<u>PROG (SEC)</u>  Bengali- 1 (SD) Education- 10	<u>All Hons. (ONLINE)</u>  English Hons (KB)

N1= NEW TEACHER 1

N2= NEW TEACHER

\*\*\*\* Online classes will be conducted in the evening via Google Meet. The link to the class will be uploaded on the ERP at least one day before the class.

ONDA THANA MAHAVIDYALAYA

PROVISIONAL ROUTINE (SESSION 2023-24)

	1 11:00-12:00	2 12:00-01:00	3 01:00-02:00	4 02:00-03:00	5 03:00 4:00	6 04:00-05:00	ONLINE
F R I D A Y  SEM 1	<u>MINOR (MN-1)</u> Bengali - 11 (SD) English – 2 (SN) Geography– [Geo Lab] Pol. Science -12 Philosophy – Indoor (M. SUTRA.)	<u>MINOR (MN-1)</u> Phys. Education- Indoor Education - 11 (JP) Sanskrit- 5 (SM)		<u>MINOR (MN-1)</u> Phys. Education- Indoor Education - 11 (SD) Sanskrit- 5 (MA)	<u>MINOR (MN-1)</u> Bengali - 11 (JA) English – 2 (BD) Geography– [Geo Lab] (SK) Pol. Science -12 Philosophy – Indoor (RS)		<u>Environmental Studies (ONLINE)</u>  Section-A Section-B Section-C  <u>Multidisciplinary (MD)</u>  <u>(ONLINE)</u>
SEM 3		<u>All Hons.</u> Bengali- 1 (SD) English -2 (BD) Education- 10 (SD) Geography - (Geo Lab) Philosophy- 6 (MS) Pol. Science - 9 Sanskrit – 8 (BM)	<u>All Hons.</u> Bengali- 1 (CM) English -2 (ND) Education- 10 (JP) Geography - (Geo Lab) (SK) Philosophy- 6 (RS) Pol. Science - 9 (AKB) Sanskrit – 5 (SM)	<u>Prog. +HG</u> Bengali- 1 (AB) English -2 (ND) Geography - (Geo Lab) (AM) Philosophy- 6 (AG)	<u>Prog. +HG</u> Phys. Education-Indoor Pol. Science - 9 Sanskrit – 5 (MA) Education- 10 (JP)		<u>All Hons. (ONLINE)</u>
SEM 5	<u>All Hons.</u> Bengali- 1 (CM) English -2 (ND) Education- 10 (SD) Geography - (Geo Lab) (AM) Philosophy- 6 (M.S) Pol. Science - 9 (AKB) Sanskrit – 5 (SM)	<u>Prog...</u> PHILOSOPHY- 12 (M. SUTRADHAR)  <u>Hons.</u> Bengali- comp. lab (AB) English- union room (ND)	<u>All Hons.</u> English -12 (AB) Education- indoor Geography - (11) (AM) Philosophy- comp lab Sanskrit – 8 (BM)	<u>Hons.</u> Bengali- 8 (CM) Pol. Science – COMP. LAB  <u>Prog. (SEC)</u> Phys. Education-Indoor Pol. Science - 9 (AKB) Sanskrit – 5 (BM) Education- 10	<u>PROG (SEC)</u> Bengali- 1 Geography - (COMP. Lab)  <u>HONS</u> Philosophy- 6 (AG)	All Hons. Bengali- 1 English -2 (AB) Education- 10 Geography - (Geo Lab) (SK) Philosophy- 6 (RS) Pol. Science - 9 Sanskrit – 5 (MA)	

N1= NEW TEACHER 1

N2= NEW TEACHER

\*\*\*\* Online classes will be conducted in the evening via Google Meet. The link to the class will be uploaded on the ERP at least one day before the class.

ONDA THANA MAHAVIDYALAYA  
PROVISIONAL ROUTINE (SESSION 2023-24)

	1 11:00-12:00	2 12:00-01:00	3 01:00-02:00	4 02:00-03:00	5 03:00-04:00	6 04:00-05:00	ONLINE
S A T U R D A Y SEM 1	<u>Compulsory English</u> Section-A (AB) (INDOOR) Section-B – 11 (KB) Section-C- 3 (ND)		<u>MINOR (MN-1)</u> Bengali - 11 (CM) English – 2 (ND) Geography– [Geo Lab] (AM) Sanskrit – 5 (RK) Phys. Education-[Indoor] (TKS)	<u>MINOR (MN-1)</u> Philosophy – 11 (SD) Education- indoor (BD) Pol. Science- 8			English Major (BD)
SEM 3	<u>All Hons.</u> Bengali- 1 (JA) English -2 (N2) Education- 10 (JP) Geography - (Geo Lab) Philosophy- 6 (MS) Pol. Science - 9 (AKB) Sanskrit – 5 (MA)  <u>Prog</u> PHILOSOPHY- 12 (RS)	<u>All Hons.</u> Bengali- 1 (CM) English -2 (KB) Education- 10 (BD) Geography - (Geo Lab) (AM) Philosophy- 6 (RS) Pol. Science - 9 (AKB) Sanskrit – 5 (BM)  <u>Prog (MIL)</u> Sanskrit- union room (RK)		<u>Prog. (SEC)</u> Bengali- 1 (JA) English -2 (N2) Education- 10 (JP) Geography - (Geo Lab) (SK) Phys. Education- comp lab (TKS) Pol. Science - 9 Sanskrit – 5 (BM)  <u>HONS</u> Philosophy- 6 (M. SUTRA)	<u>Prog (mil)</u> Bengali- 12 (CM)	<u>HONS.</u> Bengali- 1 (AB) PHILOSOPHY- 12 (SD)	<u>HONS</u> English (BD)
SEM 5	<u>Hons.</u> Sanskrit- 8 (BM) Bengali- COMP LAB (SD)	<u>PROG</u> Bengali- 12 (SD) English – 8 (N2) Education- 11 Geography – comp lab Philosophy- indoor (MS)	<u>All Hons.</u> Bengali- 1 (JA) English -comp lab (KB) Education- union room (JP) Geography - (Geo Lab) (SK) Philosophy- 6 (MS) Pol. Science - 9 (AKB) Sanskrit – 8 (MA)	<u>Hons.</u> Sanskrit- 12 SM) ENGLISH- Union Room (ND)	<u>All Hons.</u> Bengali- 1 (AB) English -2 (ND) Education- 10 Geography - (Geo ) Philosophy- 6 (M. SUTRA) Pol. Science - 9 Sanskrit – 8 (SM)  <u>PROG</u> Education- 11 (BD) Pol. Science – union room Physical Education-Indoor (TKS) Sanskrit – 5 (RK)	<u>All Hons.</u> Education- union room Geography - (Geo Lab) Pol. Science - 9	<u>Hons</u> English (BD)

N1= NEW TEACHER 1

N2= NEW TEACHER

\*\*\*\* Online classes will be conducted in the evening via Google Meet. The link to the class will be uploaded on the ERP at least one day before the class.

Academic Calendar



**ONDA THANA MAHAVIDYALAYA**  
**ACADEMIC CALENDAR & HOLIDAYS (01/07/2023 to 31/12/2023)**  
**SESSION: 2023-24**

Occasion	Date	Day	Number of Holiday's
Admission of New students, Sem-I	As per the WB Govt. program		
Guru Purnima	03/07/2023		
Rath Jatra	08/07/2023	Sunday	01
Muharram	29/07/2023	Wednesday	01
University Exam	03-29/08/2023		
Independence Day	15/08/2023	Thursday	Observation
Manasa Puja (Local Festival)	17/08/2023 to 18/08/2023	Saturday to Sunday	01
Rakhi Purnima (Rakhi Bandhan)	31/08/2023	Monday	01
Teacher's Day	05/09/2023	Monday to Tuesday	02
Janmastami & Nanda Utsav	06/09/2023 to 07/09/2023	Tuesday	Celebration
Fateha-Dwaz-Daham	28/09/2023	Monday	01
Biswakarma Puja	18/09/2023	Tuesday	01
Gandhi Jayanti/ Mahalaya	02/10/2023	Wednesday	01
Durga Puja & Laxmi Puja	19/10/2023 to 29/10/2023	Monday to Saturday	11
Internal Assessment	13/10/2023	Wednesday	-----
Kalipuja, & Bhatriditya	10/11/2023 to 12/11/2023	Wednesday to Monday	04
Chhat Puja	20/11/2023	Thursday to Friday	02
Jagaddhatri Puja	21/11/2023	Sunday	00
Guru Nanak's Jayanti, Birsa Munda Jayanti & Rash Purnima	27/11/2023	Friday	01
Karam Puja	To be notified by WB Govt.		01
World AIDs Day	01/12/2023	Sunday	Observation

Annual Sports	18/12/2023-19/12/2023	Wednesday-Thursday	
Day after Annual Sports	20/12/2023	Friday	01
Christmas Day	25/12/2023	Wednesday	01
Winter Vacation	26/12/2023 to 31/12/2023	Thursday to Monday	05

**ONDA THANA MAHAVIDYALAYA**  
**ACADEMIC CALENDAR & HOLIDAYS (01/01/2024 to 30/06/2024)**  
**SESSION: 2023-24**

Occasion	Date	Day	Number of Holiday's
BKU UG SEM-I, III & V Final Examination	As per University program	-----	-----
New Year's Day- 2024	01/01/2024	Wednesday	01
Swami Vivekananda's Birthday	12/01/2024	Sunday	Observation
Makarsankranti (Local Festival)	15/01/2024	Tuesday	01
Ekhan (Local Festival)	16/01/2024	Wednesday	01
Netaji Jayanti	23/01/2024	Thursday	Observation
Republic Day	26/01/2024	Sunday	Observation
College Foundation Day & After Foundation day	03/02/2024	Monday	Celebration
	04/02/2024	Tuesday	01

Saraswati Puja	04-05/02/2024		01
Celebration of International Language Day	21/02/2024	Friday	Observation
Sob-e-Barat	26/02/2024	Friday	01
Maha Shivaratri	08/03/2024 to 09/03/2024	Wednesday to Thursday	02
Doljatra & Holly	25/03/2024 to 26/03/2024	Friday to Saturday	02
Eid-ul-Fitar/ Ramzan Id	10/04/2024	Monday	01
Dr. B.R Ambedkar Jayanti	14/03/2024		
Bengali New Year's Day	15/04/2024	Thursday	01
Good Friday	18/04/2024	Monday	01
Mahavir Jayanti	21/04/2024	Friday	01

May Day	01/05/2024	Thursday	01
Rabindra Jayanti	09/05/2024	Friday	Celebration
Internal Assessment	13/05/2024		
Buddha Purnima	23/05/2024	Monday	01
Internal Re-Assessment (2 <sup>nd</sup> phase)	25/05/2024		
Internal Re-Assessment (3 <sup>rd</sup> phase)	29/05/2024	-----	-----
Id-Ui-Adha/Bakrid	17/06/2024	Saturday	01
Rath Jatra	27/06/2024	Friday	01
			<b>51</b>

**Total Days-366, Total Sundays- 53, Total Holidays – 53, Working days- 260, Teaching days- 206**